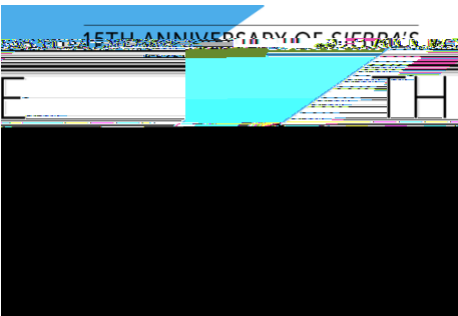
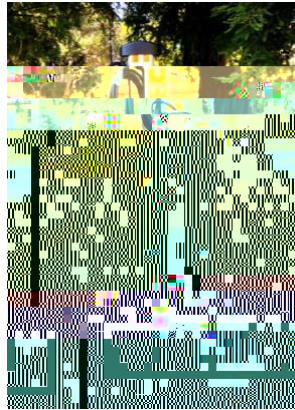
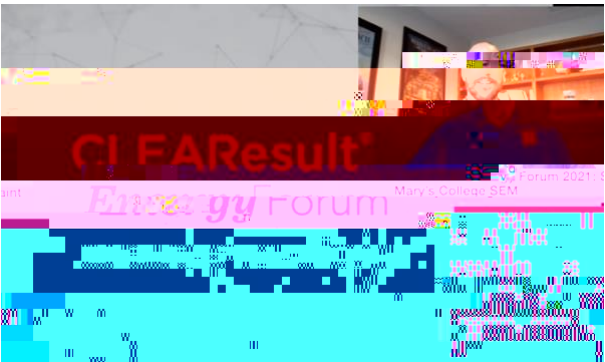
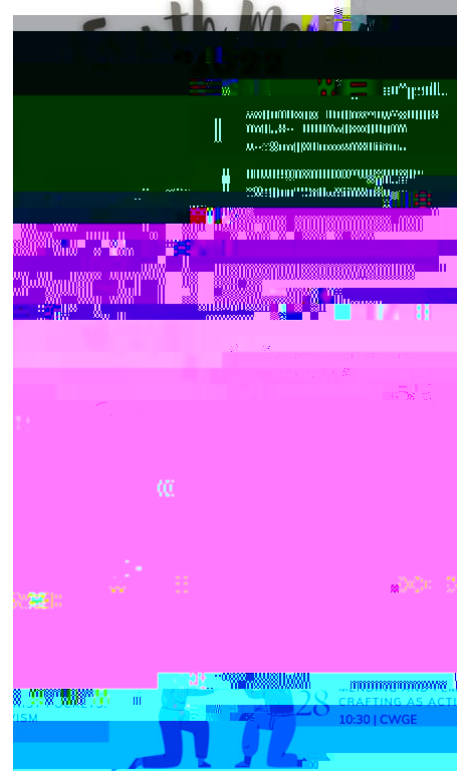
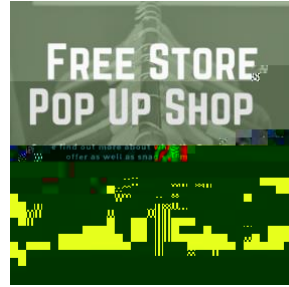


The following end of year letter serves as the 2021-2022 Saint Mary's Sustainability Annual Report.





June 22, 2022

Dear President Plumb,

This letter is intended to highlight several notable achievements, as well as future plans of the President's Sustainability Committee. Thanks to the leadership of faculty, staff, and students, many of whom dedicate time and energy beyond their regular service obligations and responsibilities, the College continues to reach new sustainability milestones despite significant obstacles. We write this against the backdrop of the Sixth UN IPCC's Assessment – the bleakest warning on climate change yet. Many in our Saint Mary's community have personally felt the increasingly disastrous effects of climate change – losing homes, evacuating from fires and floods, as well as the health impacts of our changing climate and atmosphere. Grounded in our Catholic, Lasallian values, our Committee's work aims to fulfill the College's Climate Action Plan and advance sustainability goals with an acknowledgment and urgency that any further delay will make already-devastating environmental impacts more severe.

This year's work began before students arrived back on campus. In July and again in August, members of the Committee convened a hyflex Sustainability Summit to revisit our vision, purpose, priorities, and governance structure. Rich discussion generated a reconstitution of the Committee's membership, roles, and responsibilities. What resulted was new Faculty Handbook language, which the Academic Senate adopted on November 17, 2021, and will be updated in the 2022-2023 Faculty Handbook.

Once new membership and structure were approved, and new co-chairs appointed, the Committee launched its work in several key areas:

Food

With a new food service contract on the horizon, the Committee revisited and drafted the College's Sustainable Food Plan. The plan incorporates sustainable practices into the day-to-day operations of the college dining services in an effort to reduce emissions, address inequities and build a more resilient, healthier community at Saint Mary's and beyond.

Transportation

Our final Committee meeting of the year focused on Transportation. Commuting is the third-largest source of greenhouse gas emissions at Saint Mary's, accounting for approximately 2,817 Metric Tons of Carbon Dioxide equivalent, or 20% of all emissions (2018 Sightlines Data). A transportation survey conducted in 2018 found that while 12% of Saint Mary's students carpool and around 3% bike, bus and/or BART to campus, the remaining commute to and from school in single-occupancy vehicles. Our Committee hopes to collaboratively work with Public Safety & Transportation to encourage and incentivize alternative modes of transportation.

Throughout the year, various members of our Committee devoted time and energy to advancing sustainability in their offices, departments, and cross

Jennifer Pigza
Carol Ann Gittens
Elizabeth Davis

Roy Wensley
Frances Sweeney
Michael Beseda